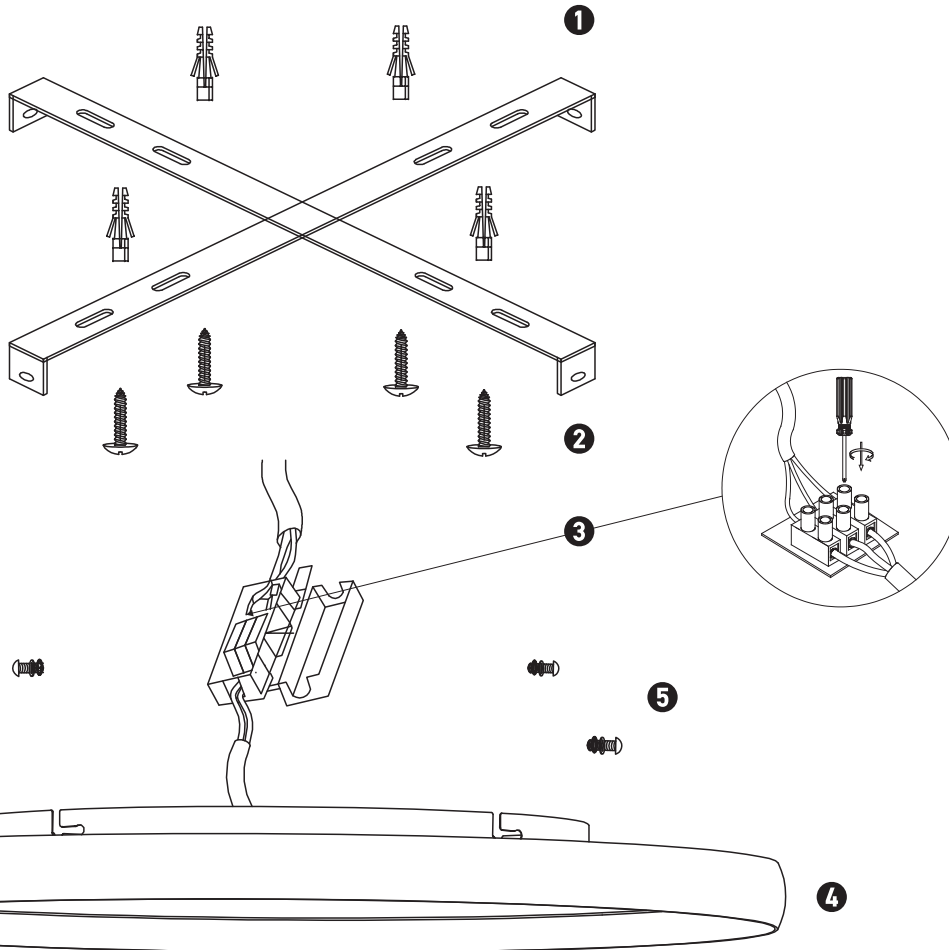
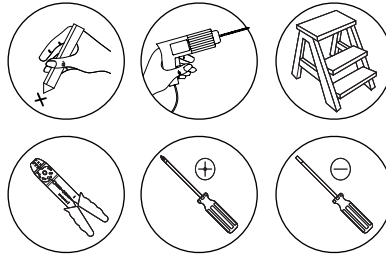


Connecting the Terminal Block

Connect main supply (**brown - Live, blue - Neutral**) into terminal block making sure all connections are tight.



INDOOR CEILING LIGHT

25190

Please read instructions before commencing installation and retain for future reference.

SPECIFICATIONS

- **Lamp Type:** LED | 42W | 2700K, 3000K, 4000K | CrI 90 | Triac
- **Material:** Metal | Aluminium | Microprismatic Acrylic
- **Ingress Protection:** IP20 Protection against entry of solid objects greater than 12mm in diameter.

INSTALLATION INSTRUCTIONS

- ⚠ Electrical products can cause death, injury, or property damage. Maintenance and installation should only be carried out by a professional electrician.
- Ensure the main supply is switched off.
- Insert the mounting anchors on the mounting surface (1).
- Fit the mounting bracket onto the mounting surface with the screws (2).
- Connect main supply wires to terminal block (3). Making sure all connections are tight.
- Fit the lighting fixture by screwing it onto the mounting bracket and fix it with the decorative screws (4-5).
- Reconnect power.

WARNING

- ⚠ Make sure that the products are installed properly before connecting to electricity. Do not cover the luminaire.
- Do not exceed the maximum wattage rating of the lamp.
- If the light source is contained in this luminaire (integrated LED), it shall only be replaced by the manufacturer, his service agent, or a similarly qualified person.

